



Camphill California's Monthly Community VOICE

Welcome New Coworkers!

New Coworkers 2016/17



Joelle Anderson
Joelle is from the U.S. She is 30 years old. She will be living in Chrysalis next year. Joelle will arrive July 24th.



Minh Vinh Ngo
Minh Vinh is from Germany. He is 18 years old. He will be living in Chrysalis next year. Minh Vinh will arrive in the end of July.



Serena Hoskyns
Serena is from the U.S. She is 20 years old. She will be living in Marimi next year.



Megan Gelb
Megan is from the U.S. She is 21 years old. She will be living in Aulinta next year. Megan will arrive July 25th.



Sebastian Goersch
Sebastian is from Germany. He is 24 years old. He will arrive July 30.



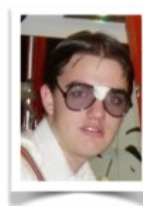
Francesco Gubliani
Francesco is from Italy. He is 20 years old. He will be living in Ishi next year. Francesco will arrive July 24th.



Carmen Kreutzer
Carmen is from Germany. She is 24 years old. She will be living in Ishi next year. Carmen will arrive in the end of July.



Sarah Juster
Sarah is from the U.S. She is 25 years old. She will be living in Chrysalis next year. Sarah will arrive July 6th.



Doug Langstraat
Doug is from the U.S. He is 29 years old. He will be living in Linden next year. Doug will arrive June 29th.

We are happy to introduce the new coworkers joining the Camphill Community this year. Summer is an exciting time in many ways, and welcoming new members to the community is definitely one of them. This year, we are saying hello to Joelle, Minh Vinh, Francesco, Carmen, Sebastian, Serena, Megan, Sarah and Doug.

Francesco has come all the way from Italy and will be taking a spot in Ishi house. From Germany we have Carmen, Sebastian and Minh Vinh joining us. Carmen will be living in Ishi, Minh Vinh will be welcomed into Ishi, and Sebastian will move into Chrysalis. All from the United States, Serena will be joining Marimi, Sarah and Joelle will be living in Chrysalis, Megan will be welcomed by Aulinta, and Doug will make his home in Linden.

We look forward to discover what each individual has to offer the Camphill Communities California!

The Land Group

Over the past few months, a team of our dedicated coworkers have been working diligently to create a community based Land Group focused on maintaining



Camphill California's gardens, vineyards and landscapes here in the community. The Land Group is divided into three crews, the Ishi Garden crew, the Marimi Garden crew, and the Estate Crew, who meet weekly to discuss their progress and goals moving forward. One important aspect of the Land Group is to incorporate biodynamics into the work they do on

and with the land.

Developed by Dr. Rudolf Steiner in the 1920s as a response to German farmers' inquiries on how to yield healthier and more abundant crops, biodynamics is a holistic, ecological, and ethical approach to gardening and agricultural work. Its success depends on ecological knowledge and diversity pertinent to the area. Camphill has begun their transformation towards a biodynamic community by introducing chickens onto the land. Our free range chickens live in the Marimi garden and tend to the land in ways our human hands can't, as well as strengthen the holistic relationship between human being, animal, plant and land.

As the biodynamic practice and philosophy is strengthened in each of the land crews, it is our hope that the community will begin to feel more connected in ways unattainable without this deep connection with tending to the land.

The coworkers taking on this task are Sabrina, Robert, Joelle, Steve, Ala, Kathy, Tom and Josias, along with the friends Matthew and Nic.

Camphill California is thriving especially due to the continuous interest and support from you all, and it is greatly appreciated. Thank you so much, we couldn't do it without you!

Click the button below to check off an item from the wish list - if you wish!



Camphill Communities California | 831-476-7194 | [Email](#) | [Website](#)

STAY CONNECTED:

